

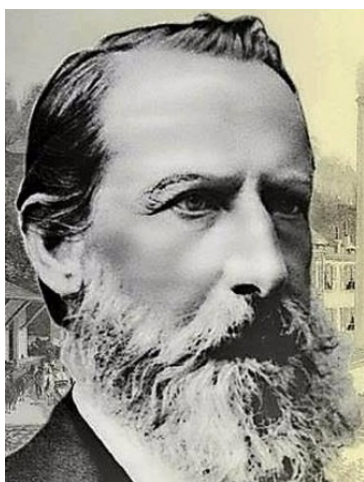
Monthly Club Information

September 2017

Sunday, 24 September at 13h00

Lunch and visit of THE NEST in Vevey

Chaussée de la Guinguette 10



Henri Nestlé



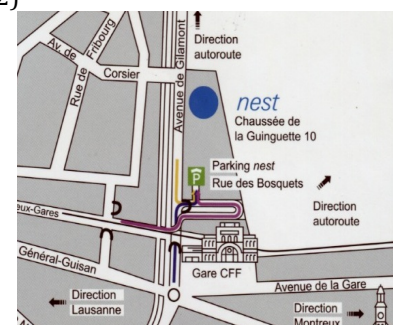
The Nest

Henri Nestlé (1814-1890) was a merchant, chemist, businessman and inventor. In 1867 he founded Nestlé, today the world's leading nutrition, health and wellness company. The ICL board proposes to relive Nestlé's unique journey through exciting experiences: to discover the humble beginnings and the values of Nestlé; to delve into the tastes and images of our childhood; to visit a mini factory in order to weigh and scan the products; to explore the challenges that Nestlé faces today; and to learn more about the link between nutrition and health.

How to reach The Nest, located at the Chaussée de la Guinguette 10 in Vevey: By car: Highway A1 - Exit Vevey - direction Centre ville - follow Av. Gillamont (along the River Veveyse) - left into Rue des Bosquets -> Parking Le Nest.

By train: Morges 12h16 - Lausanne 12h36 - Vevey 12h52 (5 min. walking distance)

Possibility to return to Lausanne by CGN ship (Vevey 17h30 - Lausanne-Ouchy 18h32)



Deadline: Wednesday, 20 September

Contact : ilausanneclub@gmail.com or Paquita: 021 801 8935
or Claude: 021 861 1131

Cost: CHF 49.- (lunch and tour)

Next event: Thursday 19 October: La Longeraie, talk on Christine de Pizan,
one of the first women writers of the 14th century

Non-members pay CHF 10.- extra.

No-shows must give at least 24 hour notice to any cancellation.

Events requiring advanced reservations will be invoiced for no-shows.

KEEP CHECKING THE WEBSITE www.icl-club.ch FOR ALL EVENTS OF INTEREST AS WELL AS CLUB ACTIVITIES